

**Prioritize the  
hygiene of the  
premises and  
safety of its  
occupants**



**SEPCRAN**

**Specialist in manufacturing,  
installation and rental of  
temporary construction  
walls and partitions.**

[sepcran.ca](http://sepcran.ca)

(418) 956-1193  
[info@sepcran.ca](mailto:info@sepcran.ca)

50 rue Émilien-Marcoux, suite 107  
Blainville (Québec) J5C 0B5

## Containment worthy of a sanitized environment

## For more than three decades,

the founders of Sepcran have been building complex construction projects related to the field of pharmaceuticals and life science.

Fully aware of the specific needs of these environments, they regret that even today, gyprock walls are still being used to contain construction sites. Not only are particles dispersed in the air when building these types of walls, but anyone who uses them know they have a neglected aesthetic, in addition to increasing construction waste after just a limited use.

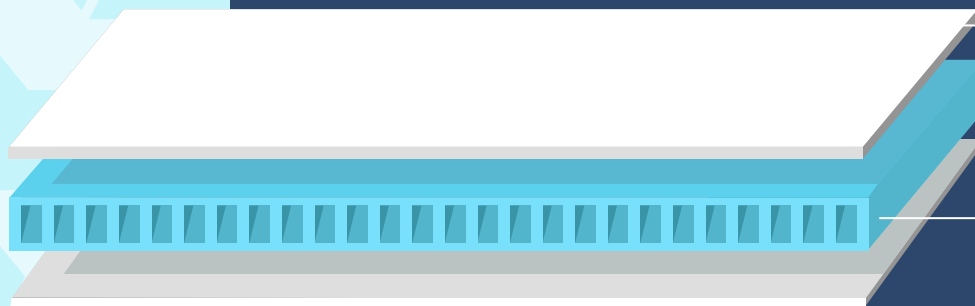
Wishing to offer healthier environments, Sepcran specializes in the manufacturing, installation and rental of temporary construction walls and partitions for sanitized or frequented areas.

## Our panel's DNA

### Fiberglass Reinforced Plastic Panels

Allows for cleaning and decontamination of the panel. Unequaled level of cleanliness due to material's resistance to mild chemicals and it's immaculate appearance.

1



### Light and Robust

Specran's temporary panels have an interior of honeycomb cardboard cells combining strength and lightness.

2

# Who are Sepcran's products for ?

Sepcran products are intended for rental use only. Any purchase of these products is subject to signing Sepcran's terms and conditions of sale. The purchaser and the end user are fully responsible for complying with Sepcran's installation methods as well as all applicable federal, provincial and local laws, statutes, regulations, ordinances and building codes.

## Users

Due to unprecedented challenges we are currently facing in the healthcare industry, Sepcran provides temporary walls to help your facility adapt quickly and safely.

In addition to panels that can be sanitized, our adjustments-free 4 sided frame steel doors are equipped with automatic dropdown bottom seals. This allows for maximum containment of dust, smoke and any possible airborne particles.

Sepcran's temporary panels are made of high quality, robust materials. They offer an aesthetic and neat quality to your projects, while offering maximum security.

## Benefits

- Esthetically pleasing
- Reduce environmental impact. 100% reusable
- Economical
- No dust or airborne particles
- Washable. Can be asepticized and decontaminated
- Increased security
- Acoustic properties
- Canadian products
- Components certified ASMT-E84 | CAN ULC-S102

## Building contractors

The challenges are great, the projects numerous and labor hard to find. Don't waste time building and tearing down temporary structures. Increase your efficiency and multiply projects while saving money.

Sepcran offers a turnkey solution. We take care of the preparation of your site. From containment, to maintenance, to the dismantling of the temporary partitions; Sepcran takes care of everything. Your team can thus devote its time quickly and efficiently to building the project to be carried out.

Offered at the same price as traditional drywall. Our business model is built on temporary wall rental, including labor and material. This model allows us to offer a product of a much higher quality than traditional drywall, without impacting your budget.

## Savings

- Turn Key
- Quick installation Day / Evening / Night
- Labor
- Loss of material
- Shipping, handling and warehouse cost
- Disposal fee
- Maintenance, repairs and adjustments
- Protection against material cost variations

### Sepcran is a building material manufacturer based in Quebec.

Originate from **30+ years of expertise** in healthcare constructions, Sepcran's mission is to support your organization by offering an eco-responsible, aesthetic, high-quality product that produces no air pollutants; while saving you money.

# Panels

## Panels

Made of fiberglass reinforce plastic, a core of honeycomb cardboard cells and strengthen by two layers of HDF.

## Usage

Sepcran's temporary walls have been designed to confine and secure worksites and/or create temporary spaces. Interior use only. Talk to your sales representative for outdoor use.

## Core

Premium quality panel designed to reduce unwanted noise and create a quieter environment. Build with honeycomb cardboard cells, laminated with two panels of recycled wood, and reinforced on each end with a wood structure.

## Surfaces

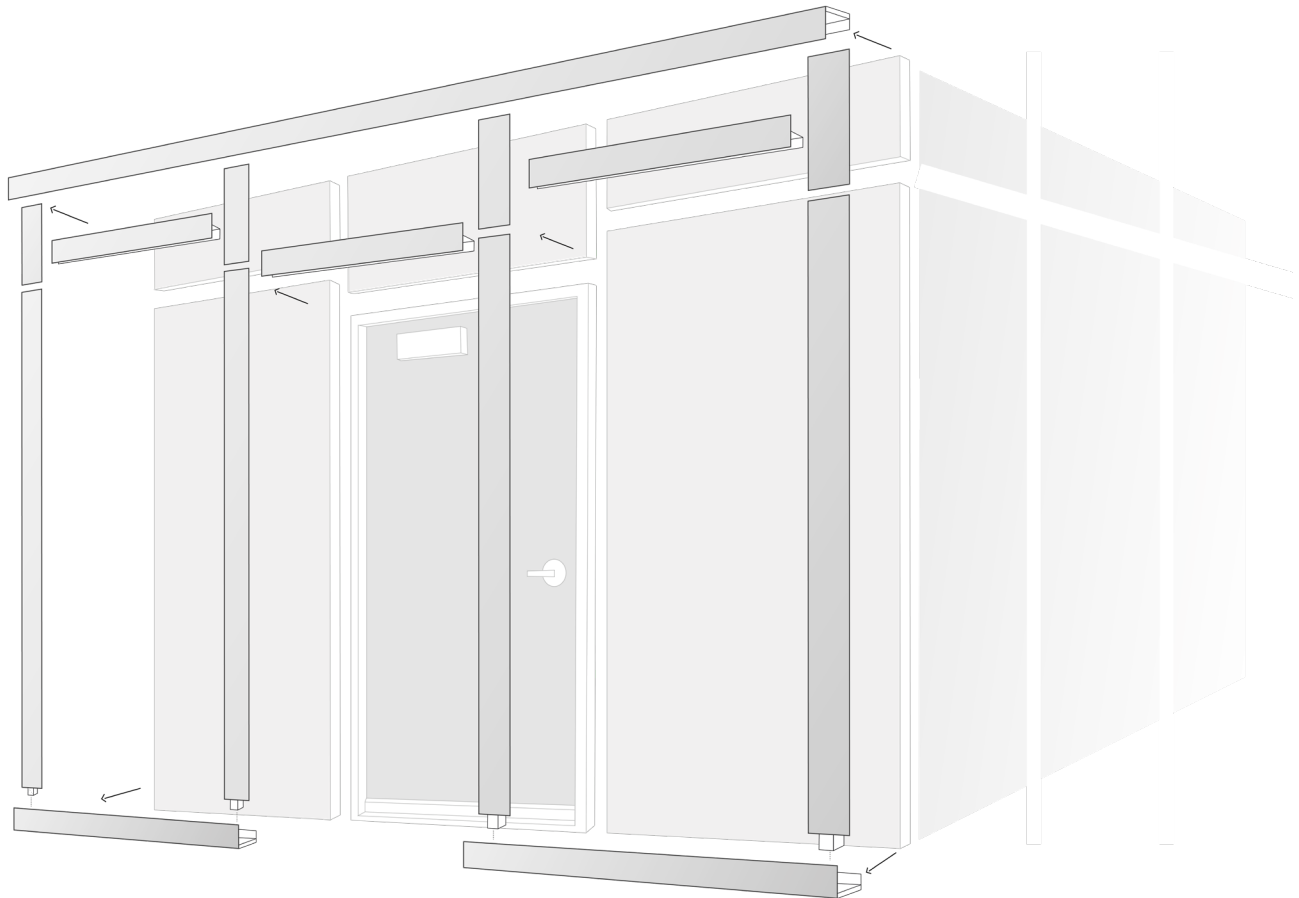
### Clean-site side

Fiberglass reinforced plastic. Durable, will not mold, rot or corrode. Exhibits excellent resistance to mild chemicals and moisture. The material composing the exterior surface has been tested according to the CAN/ULC-S102 standard against the spread of flames and the development of smoke. This surface, compared to regular FRP, demonstrates up to ten times the ease of cleaning, six times the stain resistance and twice the abrasion resistance.

### Worksite side

HDF panel coated with fireproof paint.

*\* Two clean sides also available.*



## Design properties

Finish	Thickness	Colors	Weight	Size
Fiberglass reinforced plastic (clean-site) HDF (worksite)	1 5/8 in	White, semi-gloss (clean-site) White, matte (worksite)	75 lbs	48 in X 96 in

## Tracks



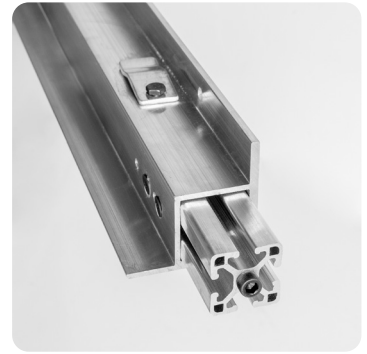
**Floor / ceiling plate**

<b>Size</b>	144 inches
<b>Weight</b>	23.21 lbs
<b>Material</b>	Industrial extruded aluminium
<b>Finish</b>	Brushed aluminium



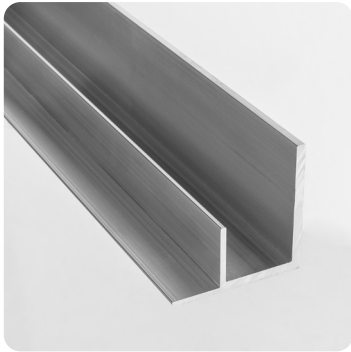
**Horizontal divider**

<b>Size</b>	46 inches
<b>Weight</b>	2.75 lbs
<b>Material</b>	Industrial extruded aluminium
<b>Finish</b>	Brushed aluminium



**Wall track**

<b>Size</b>	84 - 140.5 inches
<b>Weight</b>	20.8 lbs
<b>Material</b>	Industrial extruded aluminium
<b>Finish</b>	Brushed aluminium



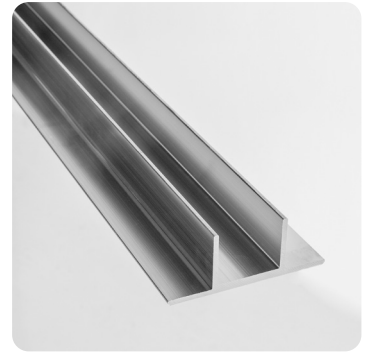
**Wall track extension finish**

<b>Size</b>	46 inches
<b>Weight</b>	7.1 lbs
<b>Material</b>	Industrial extruded aluminium
<b>Finish</b>	Brushed aluminium



**Standard stud**

<b>Size</b>	84 - 140.5 inches
<b>Weight</b>	19.4 lbs
<b>Material</b>	Industrial extruded aluminium
<b>Finish</b>	Brushed aluminium



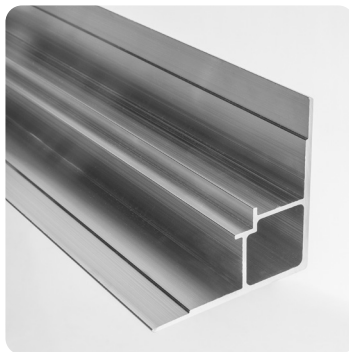
**Standard stud extension finish**

<b>Size</b>	46 inches
<b>Weight</b>	5.38 lbs
<b>Material</b>	Industrial extruded aluminium
<b>Finish</b>	Brushed aluminium



**90° exterior corner**

<b>Size</b>	84 - 140.5 inches
<b>Weight</b>	43.4 lbs
<b>Material</b>	Industrial extruded aluminium
<b>Finish</b>	Brushed aluminium



**90° exterior corner extension finish**

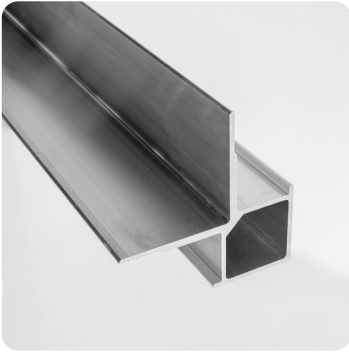
<b>Size</b>	46 inches
<b>Weight</b>	13.2 lbs
<b>Material</b>	Industrial extruded aluminium
<b>Finish</b>	Brushed aluminium



**90° interior corner**

<b>Size</b>	84 - 140.5 inches
<b>Weight</b>	41.4 lbs
<b>Material</b>	Industrial extruded aluminium
<b>Finish</b>	Brushed aluminium

## Tracks, doors & accessories



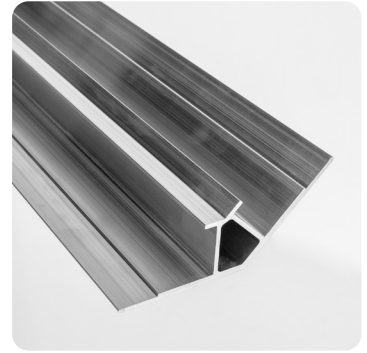
**90° interior corner extension finish**

<b>Size</b>	46 inches
<b>Weight</b>	11.83 lbs
<b>Material</b>	Industrial extruded aluminium
<b>Finish</b>	Brushed aluminium



**45° exterior corner**

<b>Size</b>	84 - 140.5 inches
<b>Weight</b>	39.4 lbs
<b>Material</b>	Industrial extruded aluminium
<b>Finish</b>	Brushed aluminium



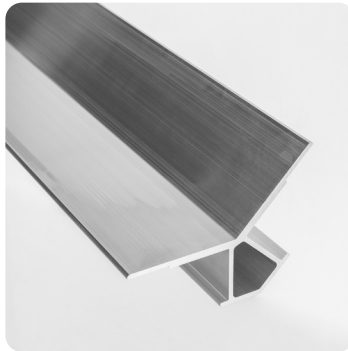
**45° exterior corner extension finish**

<b>Size</b>	46 inches
<b>Weight</b>	10.98 lbs
<b>Material</b>	Industrial extruded aluminium
<b>Finish</b>	Brushed aluminium



**45° interior corner**

<b>Size</b>	84 - 140.5 inches
<b>Weight</b>	38 lbs
<b>Material</b>	Industrial extruded aluminium
<b>Finish</b>	Brushed aluminium



**45° interior corner extension finish**

<b>Size</b>	46 inches
<b>Weight</b>	9.92 lbs
<b>Material</b>	Industrial extruded aluminium
<b>Finish</b>	Brushed aluminium



**Door handle with lock**

<b>Size</b>	N/A
<b>Weight</b>	N/A
<b>Material</b>	Steel
<b>Finish</b>	Brushed



**Panic bar**

<b>Size</b>	N/A
<b>Weight</b>	N/A
<b>Material</b>	Acier
<b>Finish</b>	Brushed



**Standard steel door w/ automatic drop-down bottom seal**

<b>Size</b>	36po x 84po
<b>Weight</b>	
<b>Material</b>	Steel
<b>Finish</b>	White, matte



**Large steel door w/ automatic drop-down bottom seal**

<b>Size</b>	48po x 84po
<b>Weight</b>	
<b>Material</b>	Steel
<b>Finish</b>	White, matte

# Options

Talk to your sales representative for special requests

- Interior covering of polyethylene
- Wall wrapping
- Personalize magnetic signs with your logo and message of your choice
- Door identification

## Personalize signs



## Wall wrapping



## Where can we use our products ?

### Construction

Confine and secure construction sites, job-site offices, create airlock.

### Retail

Mall renovations, create rental spaces, commercial leasehold improvements.

### Commercial and Industrial

Head offices, create office spaces, manufacturing plants, warehouses, government buildings, trade centers, airports.

### Healthcare

Hospitals, long-term / short-term care facilities, medical clinics, dental clinics, research labs, pharmaceutical plants.



**SEPCRAN**

50 rue Émilien-Marcoux, suite 107  
Blainville (Québec) J5C 0B5

(418) 956-1193 | [info@sepcran.ca](mailto:info@sepcran.ca)

To know more about our products

Visit our website  
[sepcran.ca](http://sepcran.ca)

